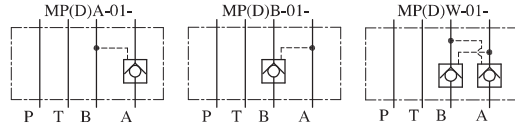


新產品 - 疊加式先導單向閥 Pilot Operated Check Modular Valves



選購指南 HOW TO ORDER

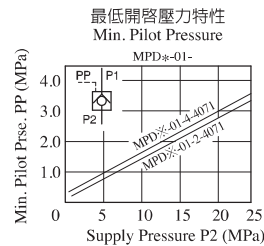
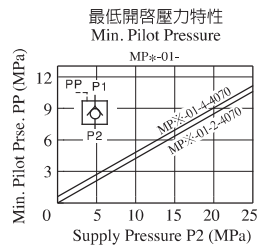
MPA	01	2	40
系列編號 SERIES NUMBER	口徑 VALVE SIZE	啓流壓力 CRACKING PRESSURE MPa (kgf/cm ²)	設計號 DESIGN NUMBER
Pilot Operated Check Modular Valves			
MPA : For P - Line	- 01 : 1/4"	- 2 : 0.2 (2) - 4 : 0.4 (4)	- 40
MPB : For B - Line			
MPW : For AB - Line			
Decompression Type Pilot Operated Check Modular Valves			
MPDA : For P - Line			
MPDB : For B - Line			
MPDW : For AB - Line			

規格說明 SPECIFICATIONS

型式 Model Series	最高使用壓力 Max. Operated Pressure MPa (kgf/cm ²)	最大流量 Max. Flow (L/min)	重量 Weight (kg)
MPA-01-※-40	31.5 (315)	40	1.2
MPB-01-※-40			
MPW-01-※-40			
MPDA-01-※-40			
MPDB-01-※-40			
MPDW-01-※-40			

性能曲線 PERFORMANCE CURVES

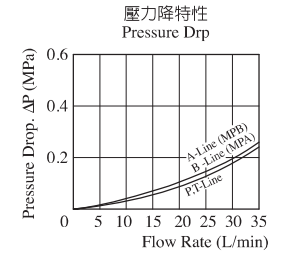
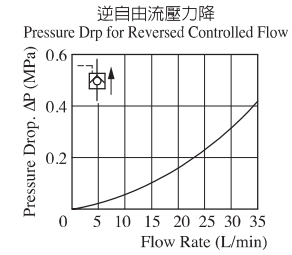
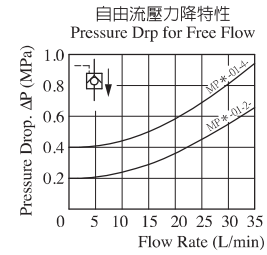
Hydraulic Fluid : Viscosity 35 cSt (35 mm²/s) , Specific Gravity 0.850



疊加式先導單向閥 Pilot Operated Check Modular Valves

性能曲線 PERFORMANCE CURVES

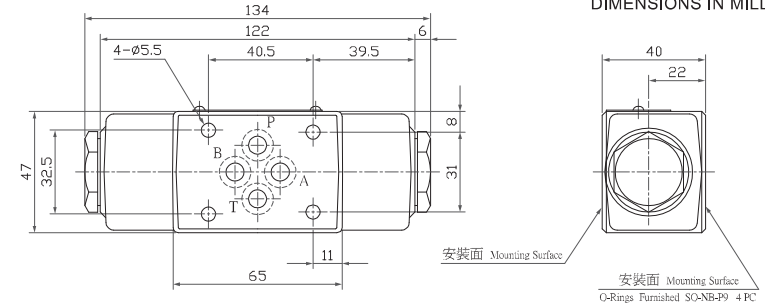
Hydraulic Fluid : Viscosity 35 cSt (35 mm²/s) , Specific Gravity 0.850



• MP※-01-※-

安裝尺寸符合ISO4401-AB-03-4-A
Mounting Surface:ISO4401-AB-03-4-A

DIMENSIONS IN MILLIMETRES



• MPD※-01-※-

